

# POINTS OF INTEREST

**Tidepools** Fitzgerald Marine Reserve (11,13), Año Nuevo (18), Natural Bridges (40), Pacific Grove shorelines (58, 59, 61), Carmel Point (71), Point Pinos (55)

**Dunes** Point Año Nuevo (18), Waddell Creek (20), beaches between Pajaro and Moss Landing (45), Salinas River Mouth (51), Ft. Ord to Monterey (56)

**Wetlands** Rodeo Lagoon (2), Pillar Point Marsh (12), Pescadero Marsh Natural Preserve (16), Elkhorn Slough (46); also at the mouths of the San Lorenzo (33), Pajaro (44), Salinas (52), Carmel (73), and Big Sur rivers (82), and Limekiln (90) and Salmon creeks (94)

**Wharves** Santa Cruz Municipal Wharf (37), Capitola Wharf (30), Monterey Municipal Wharf (67)

**Harbors** Half Moon Bay (Pillar Point) (12), Santa Cruz (31), Moss Landing (50), Monterey (64)

**Lighthouses/Lightstations** Point Bonita (4), Point Montara (11), Pigeon Point (17), Santa Cruz (West Cliff Dr.) (35), Point Pinos (Pacific Grove) (55), Point Sur (80)

**Water recreation sites** The four harbors (12, 31, 50, 64), Elkhorn Slough (48), Cannery Row (63)

**Long walks** Greyhound Rock (21), New Brighton to Seacliff Beach (28), Salinas River (51), Andrew Molera (81), Pfeiffer Big Sur (85)

**Public beaches/crowds** Santa Cruz Main Beach (34), Capitola (30), Lover's Point (58)

**Windsurfing** Waddell Creek (20), Scott Creek (22)

**Swimming/paddling** "Main" city beaches (30, 34, 58, 69); the stretch between New Brighton and Seacliff (27); Wm. R. Hearst Memorial State Beach (98)

**Surfing** Ocean Beach (San Francisco) (8), Pacifica (10), Half Moon Bay breakwater (14), Mavericks (EXPERTS ONLY) (13), Año Nuevo (18), Waddell Creek (20), Scotts Creek (22), Steamer Lane (39), Cowell's Beach (36), Pleasure Point (38), Capitola (30), Moss Landing (47), Carmel Beach (73), Andrew Molera (83)

**Scenic/vista points** Point Bonita/Marin Headlands (4), Point Montara (11), Pigeon Point (17), Año Nuevo (18), Davenport (23), West Cliff Drive (Santa Cruz) (35), Elkhorn Slough (48), Ocean View Blvd. (Pacific Grove) (61) 17 Mile Drive (in Pebble Beach) (70), Point Lobos (74), Hurricane Point (79), Point Sur Lightstation (80), Pfeiffer Beach (85), Sand Dollar Beach (91), Point Piedras Blancas (96)

**Coastal walks/hikes** Golden Gate National Recreation Area/Marin Headlands (1), Pescadero Marsh Reserve (16), Año Nuevo State Reserve (19), Wilder Ranch State Park (25), West Cliff Drive (Santa Cruz) (35), Elkhorn Slough National Estuarine Research Reserve (48), Ocean View Blvd. (Pacific Grove) (61), Point Lobos (74), Andrew Molera State Park (81), Julia Pfeiffer Burns State Park (87), Ragged Point Trail and Overlook (95)

**Scenic drives** San Francisco 49-Mile Drive (city and coastal) (9) Hwy. 1 from San Francisco to Santa Cruz (15), West Cliff Drive (Santa Cruz) (35), Ocean View Blvd. (Pacific Grove) (61), 17-Mile Drive (Pebble Beach, fee charged) (70), Hwy. 1 between Carmel and Cambria (a long, winding drive) (88).

For information about the sanctuary area above Año Nuevo Point, call (650) 712-8909

For information about the sanctuary area below Año Nuevo Point, call (831) 647-4201

# POINTS OF INTEREST, cont.

**Birds** Marin Headlands (3), Pillar Point Marsh (12), Pescadero Marsh Preserve (16), Año Nuevo (18), Moss Landing/Elkhorn Slough (49), Carmel River (72), Point Lobos (74), Soberanes Point (77).

**California sea lions** Pier 39 in San Francisco (5), "seal rocks" in San Francisco (near the Cliff House) (7) and Santa Cruz (Lighthouse Point) (41), Santa Cruz Municipal Wharf (37), Monterey Harbor breakwater (66).

**Harbor seals** Elkhorn Slough (48), Ocean View Blvd. in Pacific Grove (61), offshore rocks along Big Sur coast (84).

**Northern elephant seals** Año Nuevo State Reserve (19), Piedras Blancas (96).

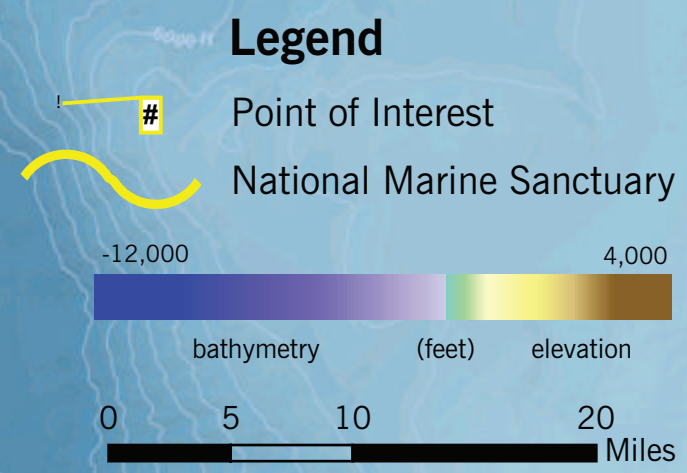
**Southern sea otters** West Cliff Drive (35), Cannery Row (63), Point Lobos (74), 17-Mile Drive (70), kelp forests from Santa Cruz to Cambria (75).

**Whales** Watch gray whales migrate (Dec.-Jan. and early March) from cliffs and coastal promontories at: Pigeon Point (along the San Mateo coast) (17), Davenport (23), Monterey Peninsula (Point Lobos) (74), and Point Sur (80).

**Offshore birds and marine mammals** Depending on season (see wildlife viewing calendar on page 8) you may see blue whales, humpback whales, killer whales (orcas), common dolphins, pacific white-sided dolphins, Dall's porpoises, bottlenose dolphins, and any number of sea birds including albatross and shearwaters.

**Interpretive Centers** Gulf of the Farallones National Marine Sanctuary Visitor Center (6), Año Nuevo State Reserve (19), Wilder Ranch State Park (25), Seymour Marine Discovery Center at UCSC's Long Marine Laboratory (26), Natural Bridges State Beach (40), Lighthouse Point and Surfing Museum (43), Santa Cruz Wharf (37), Santa Cruz Museum of Natural History (32), Elkhorn Slough National Estuarine Research Reserve (46), Monterey State Historic Park and Maritime Museum (68), Monterey Bay Aquarium (62), Pacific Grove Museum of Natural History (60), Point Pinos Lighthouse (55), Point Lobos State Reserve (74), Point Piedras Blancas (96), William Randolph Hearst Memorial State Beach (98), San Simeon State Park (97).

**Parks and Beaches** Fitzgerald Marine Reserve (11, 13), Half Moon Bay State Beach (14), Pescadero State Park and Marsh (16), Pigeon Point Light Station (17), Año Nuevo State Reserve (19), Wilder Ranch State Park (25), Natural Bridges State Beach (40), Lighthouse Point (43), Seacliff State Beach (29), Moss Landing Beach (47), Marina State Beach (53), Monterey State Historic Park (68), Lovers Point (58), Point Pinos Lighthouse (55), Asilomar State Beach (59), Carmel Beach (73), Point Lobos State Reserve (74), Garrapata State Park (76), Andrew Molera State Park (83), Julia Pfeiffer Burns State Park (87), Sand Dollar Picnic Area (92), Ragged Point (95), Point Piedras Blancas (96), William Randolph Hearst Memorial State Beach (98), San Simeon State Park (97).



Chad King - NOAA/MBNMS