



Monterey Bay National Marine Sanctuary Recreation & Tourism - Updates

June 2014

In This Issue

[Community - Santa Cruz](#)

[Community - Monterey](#)

[Community - Cambria](#)

[MBNMS on Facebook](#)

[What is the MBNMS](#)

[Events](#)

[Migrations](#)



Greetings!

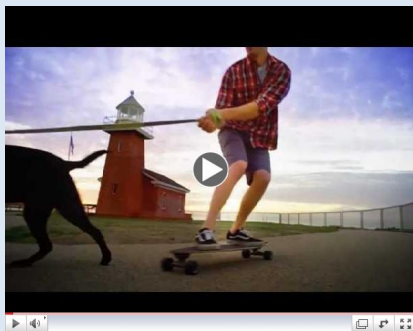
Welcome to the first issue of the recreation & tourism newsletter. We aim to better connect you to all the wonders of Monterey Bay National Marine Sanctuary. AND...to encourage you to consider how you could use your unique proximity to MBNMS to improve marketing for your business.

I've taken the liberty of adding your name to our distribution list, but should you not be interested in receiving it in the future--simply opt out by unsubscribing.

If you do have a moment, please let us know what you think! Better yet, share it with your friends, colleagues, business owners, and neighbors - they can **sign up by clicking the icon above.**

Best regards,
Deirdre Whalen (MBNMS Staff) &
Brian Nelson (MBNMS Advisory Council Member)

Community Events Santa Cruz



Let's Cruz!

[There are plenty of ways to enjoy the Sanctuary in Santa Cruz.](#)

Including visiting the [Sanctuary Exploration Center](#)
Find a complete list [Here](#)

**Have you visited the
California Whale Trail yet?**

Community Events Monterey Bay



Grab Life by the Moments in Monterey

What's happening in Monterey? Well, there is a lot to keep track of, but 'Grab Life by the Moments' and visit: [See Monterey](#) for a complete list of fun activities!

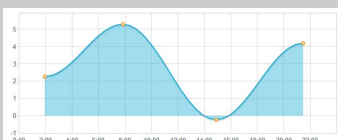
Community Events Cambria



The Coastal Discovery Center

[Learn more about CDC in San Simeon](#) and get ideas for fun Events by visiting the [Cambria Chamber of Commerce](#)

Tides and Sunsets



For up to date tidal information, sunsets,



California's Whale Trail

The Whale Trail is a network of coastal sites in the Pacific Northwest where the public can view whales and other marine mammals from shore. We are helping the system expand to California. Monterey's Point Lobos State Reserve and Lighthouse Point in Santa Cruz were chosen as two of the first three locations in California. We are excited to help promote to visitors the tremendous opportunities for wildlife watching here in central California.

What's Migrating in the Sanctuary?



Life's A Breach

Spring was a popular time for Orcas in the Sanctuary. Sanctuary Cruises recently remarked on being amazed by the number of Orcas they've encountered recently. Lately, the Humpback Whales have made their fabulous entrance. It's a great time to connect with your favorite Whale Watching Company and get out on the water to enjoy the marine mammal safari!

and sunrise times use this link for
Monterey Bay

[Tide Charts](#)

Quick Links

[Monterey Bay National Marine
Sanctuary](#)

[Monterey Chamber of Commerce](#)

[Big Sur Chamber of Commerce](#)

[Cambria Chamber of Commerce](#)

[Half Moon Bay Chamber of
Commerce](#)

Monterey Bay National
Marine Sanctuary's
Facebook page

Like us on Facebook 

CONNECT WITH YOUR SANCTUARY

Monterey Bay National Marine
Sanctuary



NATIONAL MARINE
SANCTUARIES

MONTEREY BAY

The Sanctuary Classic a Summer-long Recreational Fishing & Photo Contest

NOAA's Monterey Bay National Marine Sanctuary and the Sportfishing Conservancy announce the third annual Sanctuary Classic. The classic is a free fishing photo contest that celebrates recreational fishing in America's national marine sanctuaries and promotes conservation-focused fishing practices.

The contest began on June 7 and runs through September 1. To compete in the free contest, participants can upload fishing photos taken in any national marine sanctuary and adjacent waters to . This is not a "big fish" contest, instead winning photos will be chosen that capture the "fun of fishing" and "spirit of good sportsmanship." [Enter here:](#)



In the Spot Light: Your Sanctuary, Your Business!

Have you considered brainstorming ideas on how to better market the proximity of your business to the gorgeous Monterey

Bay National Marine Sanctuary? Are you familiar with the boatload of photos available for use here: [Simon Photo Database](#) Browse through it, you'll be impressed! Photos are easy to download & could help you synergize with the amazing protected swath of ocean nearby. Give it a shot. And.... let us know about any cross-promotion you are doing with your business & your sanctuary! Maybe we'll highlight your business here in our next issue? Hmmhm...

MONTEREY BAY
YOUR SANCTUARY.
YOUR BUSINESS.



Science Update:

Earlier this month Sanctuary Scientists & the MBARI team set out aboard a research vessel to investigate both a sunken shipping container found a mile beneath the sea, and deep sea corals. What

The Monterey Bay National Marine Sanctuary Advisory Council is your voice to the Sanctuary Management Staff. If you have questions or input please contact your local representatives:

Agriculture

Mr. Kirk Schmidt
(831) 761-8644 kschmidt@ccwqp.org

Ms. Kristina Beal
(805) 466-2288 kris@vineyardteam.org

Business and Industry

Ms. Jessica Grigsby (831) 479-1121
jessica@kayakconnection.com

Ms. Krista Hammond (831) 332-7188
krista@santacruzseaglass.com

Commercial Fishing

Ms. Kathy Fosmark
(831) 373-5238 kfosmark@aol.com

Captain Jim Moser
(831) 246-1408 tradewind39@gmail.com

Community Representatives (At Large Representatives)

Mr. James Panetta
jimmy.panetta@gmail.com

Mr. Dan Haifley
(831) 465-9390
dhaifley@oneillseaodyssey.org

Ms. Cynthia Mathews
(831) 423-8977
mathews@cruzio.com

Ms. Kortney Opshaug
leabourne@sbcglobal.net

Ms. Margaret Webb
(805) 927-2987 pjwebb@inreach.com
Mr. Gary Hoffmann gqhwd@yahoo.com

Conservation

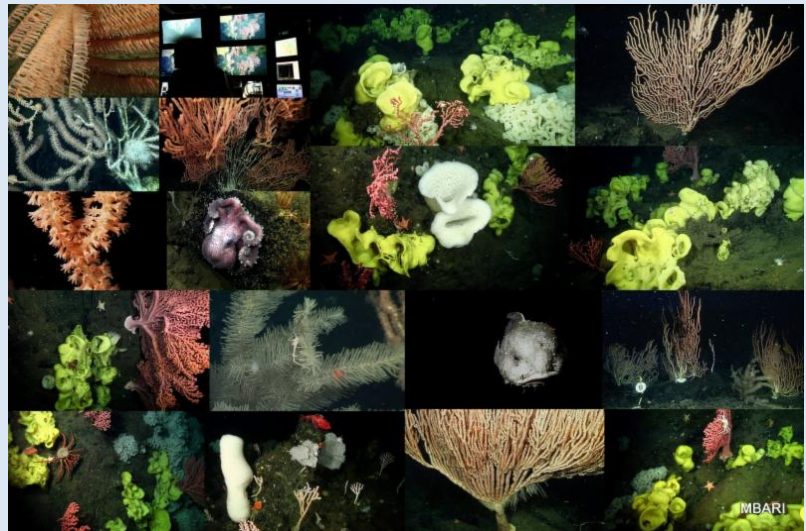
Dr. Geoffrey Shester, Ph.D.
(831) 643-9266 gshester@oceana.org

they found was amazing...

Shipping containers lost at sea range from the hundreds to the thousands - this one was originally found in the Sanctuary a decade ago, and has been used as a study site since. Staff used a deep-sea remotely-operated vehicle (ROV) to document the state of the container and its impact on the local ecology. Learn more about it by watching the short video below. It's riveting stuff!



Lost in the Deep



Sur Ridge Deep Sea Corals - it's beautiful under the sea...
Want more? Read the [Cruise Log](#)

**A Note From
Sanctuary Advisory Council Chairwoman,
PJ Webb**

Diving

Capt. Philip Sammet
(831) 915-6600 captdeep@redshift.com

Capt. Brian Nelson
(408) 483-8721 brian@pcscuba.com

Education

Dr. Simona Bartl, Ph.D. (831) 771-4431
sbartl@mlml.calstate.edu

Ms. Amity Sandage (831) 466-5711
asandage@santacruz.k12.ca.us

Recreation (Water Sports)

Mr. Gary Pezzi
(831) 440-5200 sta2bd@aol.com

Mr. Barton Selby
(650) 245-1974 bartongselby@gmail.com

Recreational Fishing

Mr. Richard Hughett
(831) 757-5709 rh@redshift.com

Mr. Robert Chatham
(831) 747-4274 chathamintl@msn.com

Research

Dr. James Lindholm, Ph.D.
(831) 582-4662
jlindholm@csusb.edu

Dr. John Hunt, Ph.D.
(831) 566-0044 jwhunt@ucdavis.edu

Tourism

Mr. Michael Bekker
(831) 649-2603 mbekker@canneryrow.com

Mr. Robert Massaro (831) 649-6544
bmassaro@bostrommanagement.com

Harbors

Moss Landing Harbor
Ms. Linda McIntyre - Alternate -
(831) 633-5417
mcintyre@mosslandingharbor.dst.ca.us

Pillar Point Harbor
Mr. Peter Grenell - Alternate -
(650) 583-4400
harbordistrict@smharbor.com

What's happening in Cambria?

This summer has been a particularly difficult year for California Sea Lions in the southern region of MBNMS.

Currently they are birthing their pups, amid an outbreak of the harmful algal bloom that causes domoic acid toxicity.

As a result, affected animals will sit in the shallow tides or on the beaches, and may appear to be confused, lethargic, or shaking. Because of the seizures that the toxicity causes, they are very unpredictable. Should you spot a marine mammal that appears to be ill or injured, here are some tips:

1. Do not touch, pick up or feed the animal. Do not return the animal to the water.
 2. Observe the animal from a distance of at least 50 feet, and keep people and dogs away.
 3. Note the physical characteristics such as size, presence of external ears and fur color.
 4. Note the animal's condition. Is it weak and skinny? Does it have open wounds?
 5. Look for any obvious identification tags or markings.
 6. Determine the animals exact location for accurate reporting.
 7. Call the Marine Mammal Center with as much information as you have.
- Main Hotline (415) 289-SEAL (7325)
 - Monterey and Santa Cruz Counties (831) 633-6298
 - San Luis Obispo County (805) 771-8300

In addition to being a longtime MBNMS- Advisory Council member, (& now Chairwoman), PJ is an outreach and education volunteer for The Marine Mammal Center. And... she finds time to serve the ocean in a myriad of other ways, including being an attorney. Learn more about PJ:

[The Cambrian](#)



Migration Forecast

It's hard not to brag when there are amazing wildlife opportunities YEAR-ROUND in MBNMS!

When I asked the staff at Sanctuary Cruises what they expect to see on their trips in the coming weeks, here's what they said: We have plenty of feeding humpback whales near Moss Landing and frequent Risso and Pacific white sided dolphin sightings. Plus the occasional Orca sightings. Early blue whales often appear along with albatross. Sounds fantastic, right?

Monterey Harbor

Mr. Steve Scheiblauber - Primary -
(831) 646-3950 scheibla@monterey.org

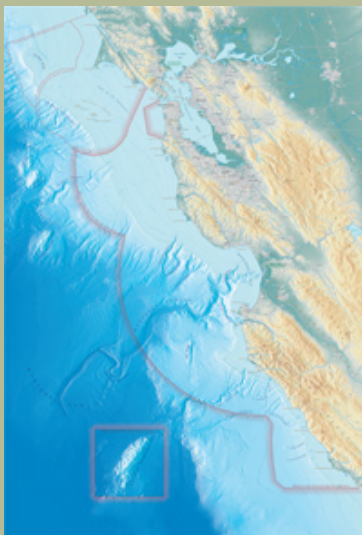
Santa Cruz Harbor

Ms. Lisa Ekers - Alternate -
(831) 475-6161 lekers@santacruzharbor.org

There are additional non-voting and supporting members of the Advisory Council. Go to [Advisory Council Complete listing and Information](#)



Monterey Bay National Marine Sanctuary



Monterey Bay National Marine Sanctuary (MBNMS) is a Federally protected marine area offshore of California's central coast.

Stretching from Marin to Cambria, the MBNMS encompasses a shoreline **length of 276 miles and 6,094** square miles of ocean. Supporting one of the world's most diverse marine ecosystems, it is home to numerous mammals, seabirds, fishes, invertebrates and plants in a remarkably productive coastal environment.

The MBNMS was established for the purpose of resource protection, research, education, and public use of this national treasure. The MBNMS is part of a system of 13 National Marine Sanctuaries and one marine national monument, administered by the National Oceanic and Atmospheric Administration.

Great Pacific Ocean Race - Row, Row, Row Your Boat.



The Great Pacific Race is the biggest, baddest human endurance challenge on the planet. Ocean rowboats of one, two and four compete against each other in the world's first rowing race on the Pacific. On June 9th teams from around the world set out on a 2,400 mile journey on the world's largest ocean from Monterey, California to Honolulu, Hawaii. **Starting and ending in two National Marine Sanctuaries!** This epic journey is expected to take between 30 and 90 days depending on the size of the crew and the weather. Each boat carries no sails or engines and is only moved by the muscle of the crew pulling on the oars! Check the Facebook pages for updates and learn more on [the race page!](#)